

SANITARY

SPG SERIES ROTARY GEAR PUMP

Performance
&
Quality



SEPA KOREA CORP.
세 파 코 리 아

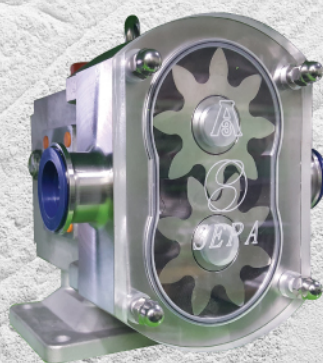
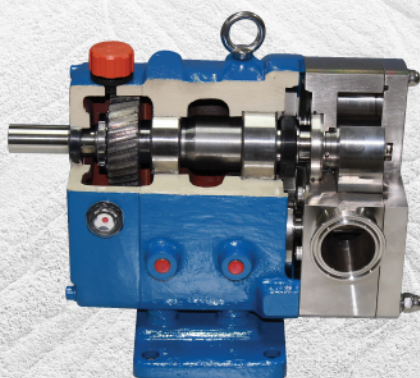
SPG SERIES ROTARY GEAR PUMP

 **SEPA KOREA CORP.**



Has been engaged in the development and manufacture of sanitary pumps since 1985. SEPA KOREA, the originality of sanitary pumps, produces the reliable, good efficiency pumps and can offer high quality pumps at competitive prices. Advanced design, proper selection of materials and precision construction reflect this wide experience. Our pumps will give trouble-free operation with minimum maintenance and repair. "MAXIMIZE EFFICIENCY, MINIMIZE TROUBLE." is the SEPA KOREA's slogan

This catalogue is intended to provide the preliminary information of our pumps. For more detailed information on our pumps and technical assistance, please contact us at any time. We have experienced engineers available for pumps and related systems to assist you on pump selection, application, installation, operation, maintenance and the other technical information.



■ APPLICATIONS

• Bakery

Batters, Dough, Frostings, Fruit Fillings, Fats & Oil, Sweeteners, Yeast slurry

• Beverage

Alcohol & wines, Beer, Fruit Concentrates, Fruit Drinks, Soft Drinks, Wort, Yest

• Canning

Baby Foods, Soups, Stews, Slurries, Cream style Vegetables, Vegetable Diced, Fruit Puree, Potato Salad, Puddings, Jam, Jellies, Mayonnaise, Salad Dressings

• Cosmetics

Dyes, Alcohols, Face creams, Lotions, Essential oils, Hair styling gels & Liquids

• Pharmaceutical

Extracts, Emulsions, Pill Paste, Slurries, Syrups



• Dairy

Cheese Curd & Whey, Cottage cheese, Cream, Milk, Yogurt

• Meat Packing

Ground Meats, Meat-Emulsions, Pet Foods, Ruffle & Caul Fat

■ FEATURES

- Quantitative Transfer
- Simple Construction & Easy Maintenance
- Rotation Reversible
- Low Noise and Low Vibration
- Corrsion Resistant Material (SUS316 / SUS316L)
- M/Seal : Single or Double (TC/TC, Sic/Sic)

■ CONNECTIONS

- IDF Male, ISO Clamp, 3A, SMS, DIN and Flange

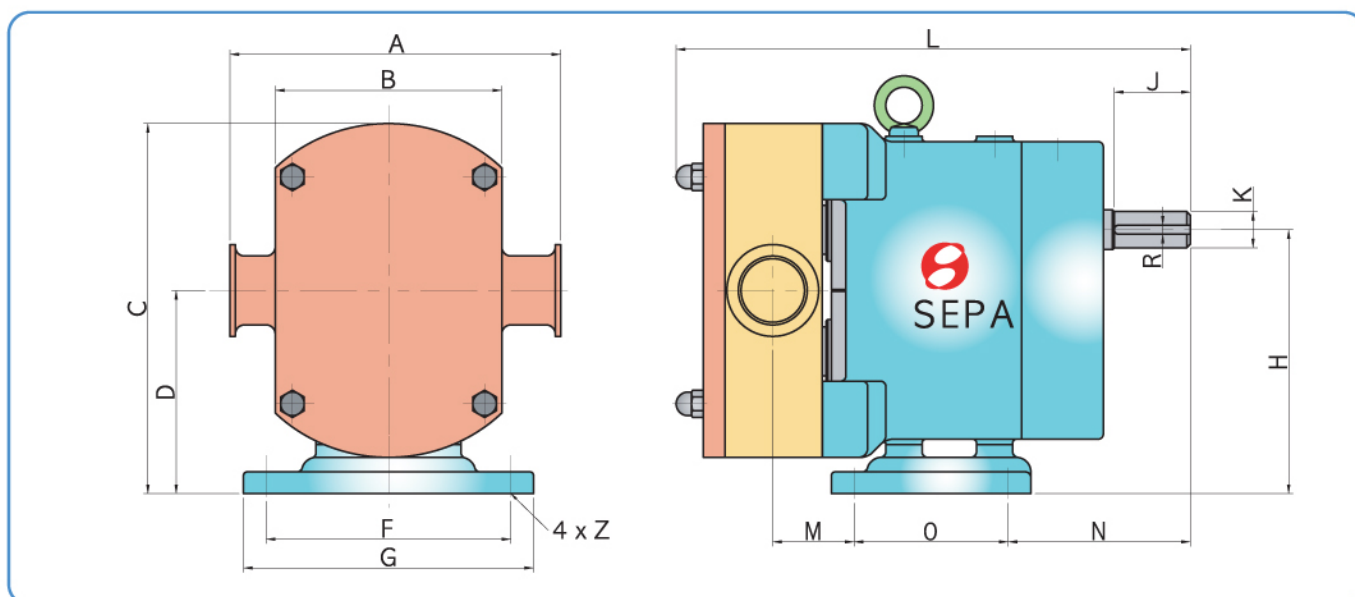


■ STANDARD SPECIFICATIONS

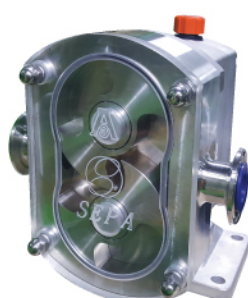
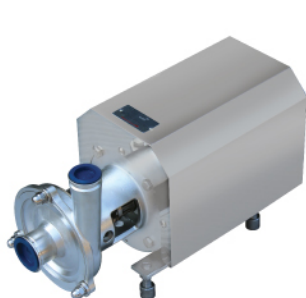
MODEL	CONNECTION		CAPACITY (ℓ /1rev)	MAXIMUM SPEED (Rev/min)	MAX.ALLOW. PRESS.	
	mm	Inches			BAR	PSI
SPG-35	25	1.0 S	0.07	800	10	145
SPG-75	40	1.5 S	0.11	800	10	145
SPG-100	40	1.5 S	0.19	500	10	145
SPG-150	50	2.0 S	0.27	500	10	145
SPG-250	50	2.0 S	0.54	500	10	145
SPG-410	80	3.0 S	0.90	500	10	145

SPG SERIES ROTARY GEAR PUMP

PUMP DIMENSION



MODEL	Port	A	B	C	D	F	G	H	J	K	L	M	N	O	R	Z
SPG-35	1.0S	174	125	204	112	135	160	146	42	20	278	45	100	85	6	12
SPG-75	1.5S	174	125	204	112	135	160	146	42	20	283	45	100	85	6	12
SPG-100	1.5S	218	160	268	153	128	162	195	45	27	328	50	122	100	8	15
SPG-150	2.0S	218	160	268	153	128	162	195	45	27	340	50	122	100	8	15
SPG-250	2.0S	275	213	342	189	182	220	246	57	40	384	52	112	172	12	15
SPG-410	3.0S	275	213	342	189	205	250	246	57	40	415	43	112	172	12	15



SEPA KOREA CORP.

Head Office & Factory

116-22, Juseok-ro, Namyang-eup, Hwaseong-si
Gyeonggi-do, 18255, KOREA

Sanitary Div T) +82)70-8769-6301, F) +82)31-356-7685

Pump Div T) +82)70-8769-2823

M.Seal Div T) +82)70-8769-6300

<http://www.sepakorea.com>

Agent

